



## Water Based, Acrylic Resin, Membrane Forming Compound, for Curing and Sealing of Cement Bound Substrates

### General

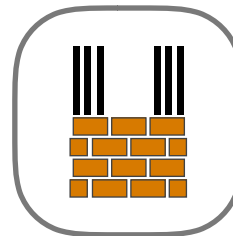
**SS - CureSeal AC** is a specially formulated Acrylic Resin Emulsion in Water, which forms a membrane on drying and helps cure and seal fresh concrete. The membrane formation reduces evaporation of water in the concrete, allowing the concrete to hydrate and cure completely. **SS - CureSeal AC** contains special additives to improve complete coverage of the concrete surface, adhesion and unbroken film formation. This breathable membrane, prevents external water from entering the concrete and allows excess moisture in concrete to move out very slowly as water vapour, thus allowing concrete to dry out completely after 28 days.

**SS - CureSeal AC** also heals minor surface cracks in concrete. The material does not degrade under UV, but does not hinder bond to the concrete. It can be used as a high efficiency, spray-applied curing compound for interior and exterior applications on plaster or concrete surfaces. It is particularly suitable for applications where subsequent surface treatments, such as paints, renders, bonding agents (for precast elements) are to be applied.

The material is solvent free, water based & environmentally friendly. It seals and protects the concrete, thus providing dust free surfaces. It conforms to ASTM C 309.

### Product Features

- Membrane Forming Curing Compound
- Allows complete hydration of cement in Concrete
- Reduces surface permeability, shrinkage, cracks, dusting and thus improves durability of concrete
- No need for removal, does not hinder bond
- Can be painted, coated, bonded over
- Solvent free, water based, Low VOC
- Prevents water wastage, improves cleanliness on site
- Easy to apply by brush, roller or spray
- UV Resistant, seals concrete safely, can be used outdoors
- Economical, single use, easy to quality control

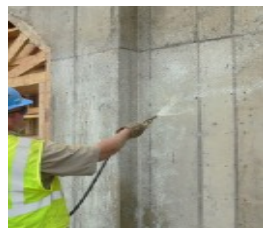


Concreting & Finishing Aids



### Areas of Application

- Concrete Walls, Ceilings, Floors
- Most suited for Precast Elements in casting yards
- Curing precast segments for Metro Tunnels
- Bridges, chimneys and other tall structures
- Plastered surfaces
- Areas where subsequent surface treatments are expected
- Roofs, slabs
- Foundations
- Over Patch repairs and cementitious waterproofing systems



### Areas of Application

<b>Specification Keywords</b>	Water Based, Acrylic Resin Emulsion, Membrane Forming Curing Compound, UV Resistant, Bond Enhancing, No Removal, Concrete Sealer
<b>Delivered As</b>	Low Viscosity White Liquid
<b>Storage Instructions</b>	In Original Packing. In a cool dry place.
<b>Shelf Life</b>	12 Months from date of Manufacture.
<b>Post Use</b>	Use Complete Packs, Dispose packaging according to local regulations.
<b>Packing Size</b>	20 kg, 30 kg, 230 kg



## Hazards and Safety



## Technical Data

<b>Specific Gravity</b>	1.01 +/- 0.05
<b>Consumption</b>	Approx. 150 to 200 grams / sq. m.
<b>Coverage</b>	~ 5.0 sq. m / kg
<b>Application Time After</b>	Initial set of concrete on horizontal surfaces; Post stripping of formwork on vertical surfaces
<b>Surface Usable After</b>	Curing period of Concrete, Plaster

## Instructions for Use

Always test in a small inconspicuous area with a 24-hour cure time to determine consumption, ease of application and desired results. The recommended application rate (preferably by a spray applicator) is 5 sq. m / kg. Over application may result in a slightly glassy concrete surface finish. For Horizontal surfaces, apply **SS - CureSeal AC** to freshly cast horizontal surfaces immediately after the initial surface water sheen has disappeared. Do not apply it to concrete if standing water is present. For Vertical surfaces, apply it immediately to the 'as stripped' concrete surface (there is no prerequisite to damp down the surface prior to application).

In case the application of **SS - CureSeal AC** on stripped concrete is delayed by more than 2 hours, mist the surface of the concrete with water, prior to application of **SS - CureSeal AC**. The application can be done by brush, roller or spray. Do not dilute the product. Mix the contents of the packaging well, prior to use.

**SS - CureSeal AC** appears milky white in the container and, when first applied, leaves a bluish cast on the concrete for easy visual confirmation of coverage. It dries clear to provide a transparent finish on concrete. For use as a concrete sealer, Follow substrate preparation rules for painting surfaces. The substrate must be clean, dry and free from all loose particles, old paint, dust, oil and other materials having a separating effect. The substrate should be of sound nature and adequate strength (pull off strength > 1.5 N/mm<sup>2</sup> is most suitable) for maximum protection.

Wait until concrete has cured sufficiently and gained enough mechanical strength, prior to commencing further surface finishes such as paints, plasters, tile adhesives, etc. **SS - CureSeal AC** would be compatible with most surface treatments, however a preliminary trial is always recommended.

## Safety and Precautions

- It may cause damage to skin and eyes. Wear protective gloves and goggles and take the usual precautions for handling chemicals while using. If inhaled, move immediately to fresh air. In case of skin or eye contact, flush immediately with water for 15 minutes.
- Clean up promptly after job is complete. Clean equipment with water and allow to dry in a well-ventilated area. Allow rags etc. to dry in a well-ventilated area out of the reach of children and pets.
- Local, state and federal regulations should be consulted for proper disposal procedures.